

Taxiway Golf & Chipmunk Place Projects - 2023

May 2023




Yukon



Project Overview

Yukon government (YG) has committed to upgrades and improvements at ENWIA to support the development and growth of the aviation industry in the Yukon. The 2023 Taxiway Golf projects are a continuation of the 2022 projects and will deliver the following:

- Re-aligned Taxiway G to support larger aircraft.
- Five new serviced lease lots on Taxiway G stubs
- Fire hydrant coverage for Taxiway G stubs lease lots
- New tie-downs on Taxiway G



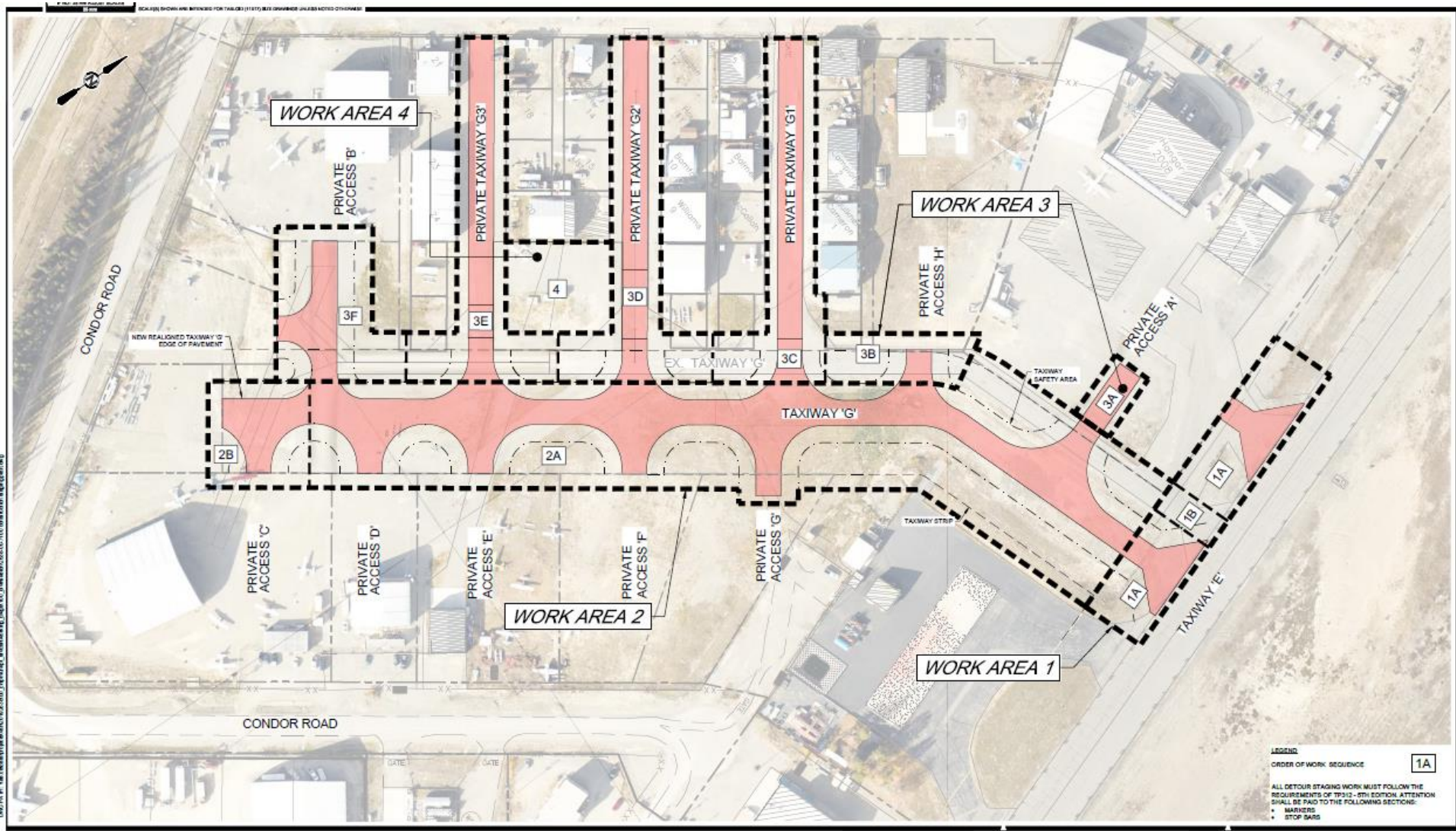
Stakeholder Engagement

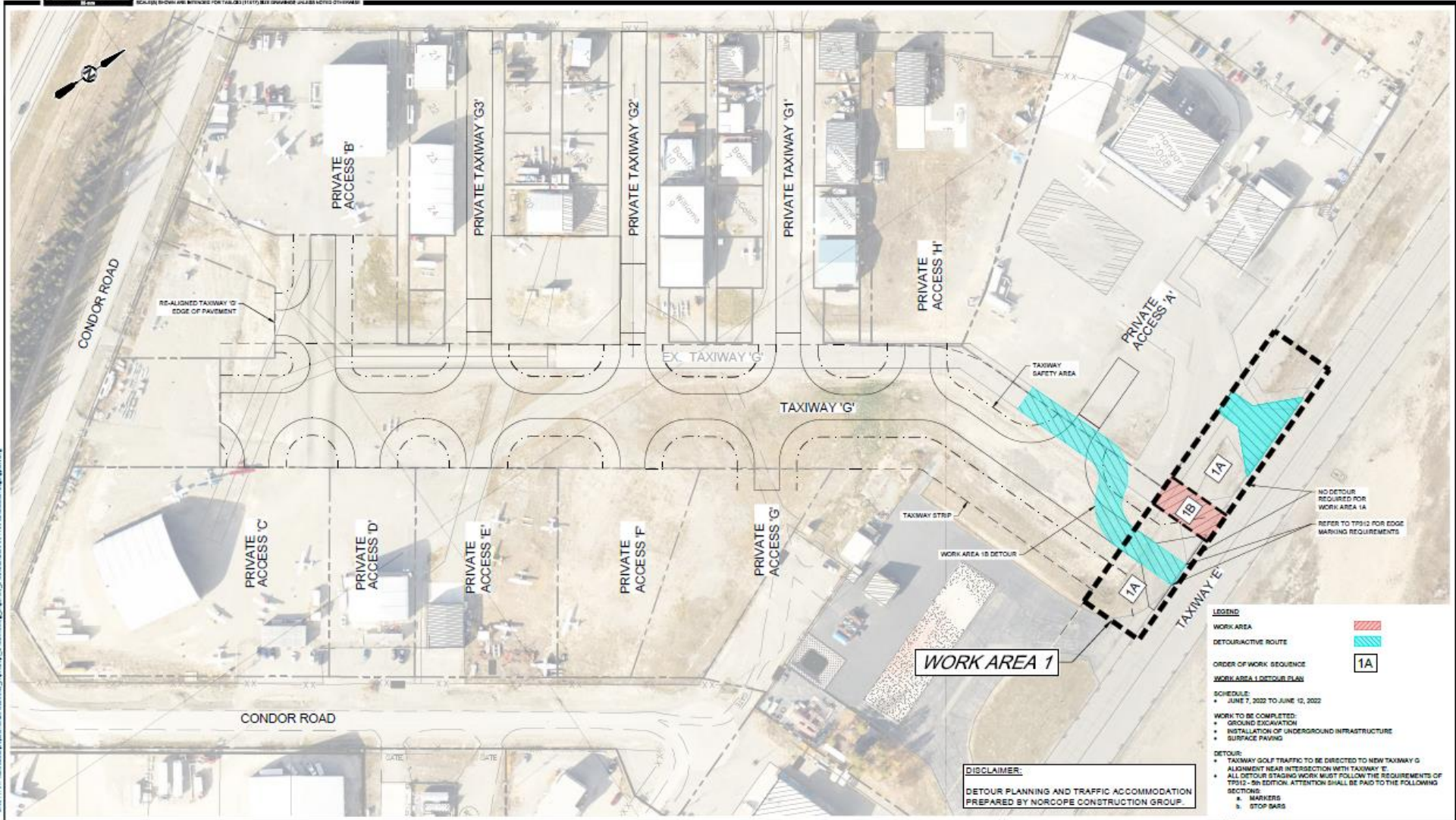
- Stakeholders will be engaged on a regular basis in order to minimize interruptions to aviation operators, to make tenants aware of changes and detours that will apply during the construction season, and to check-in regularly to ensure that mitigations are working for operators.

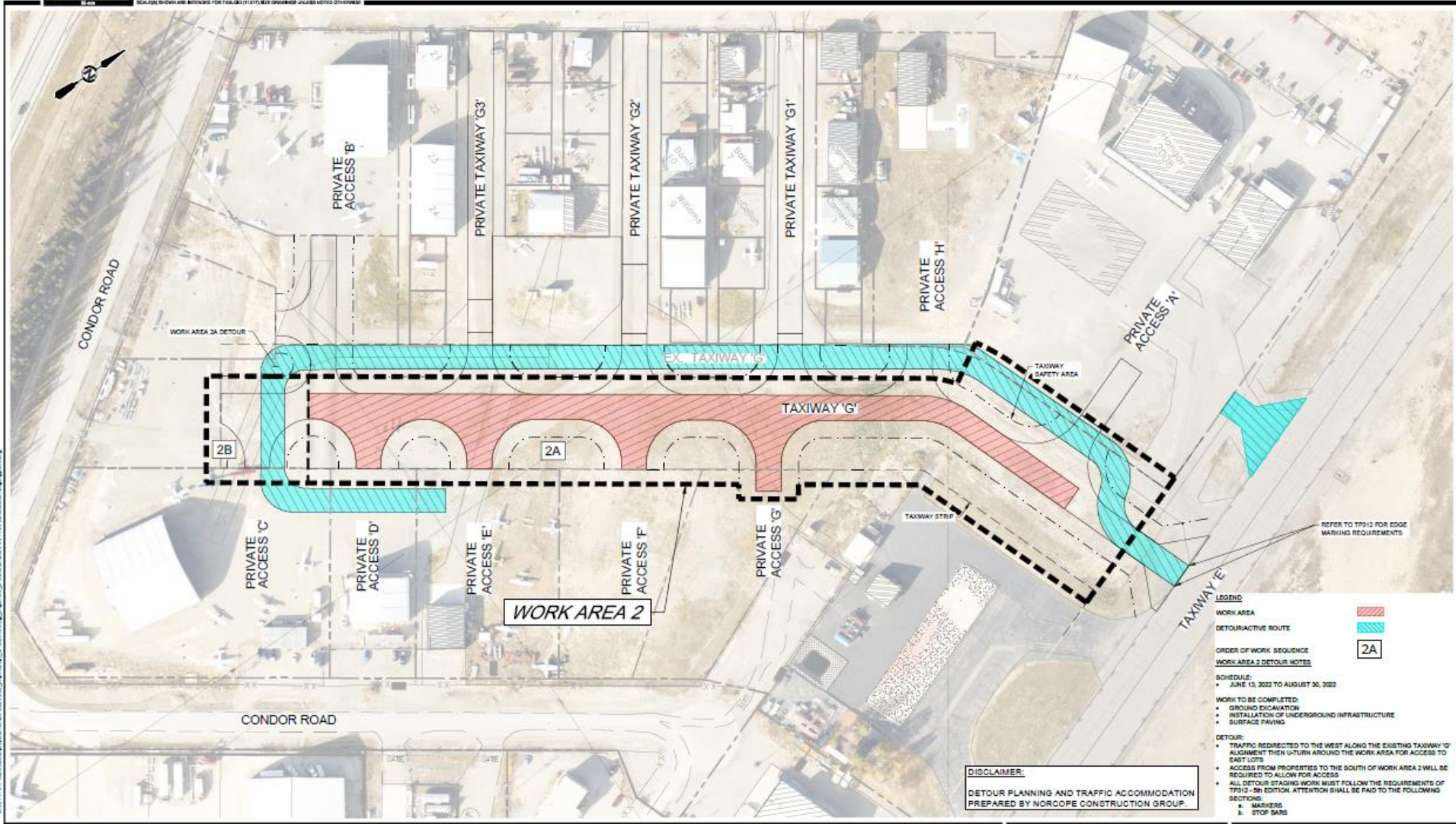


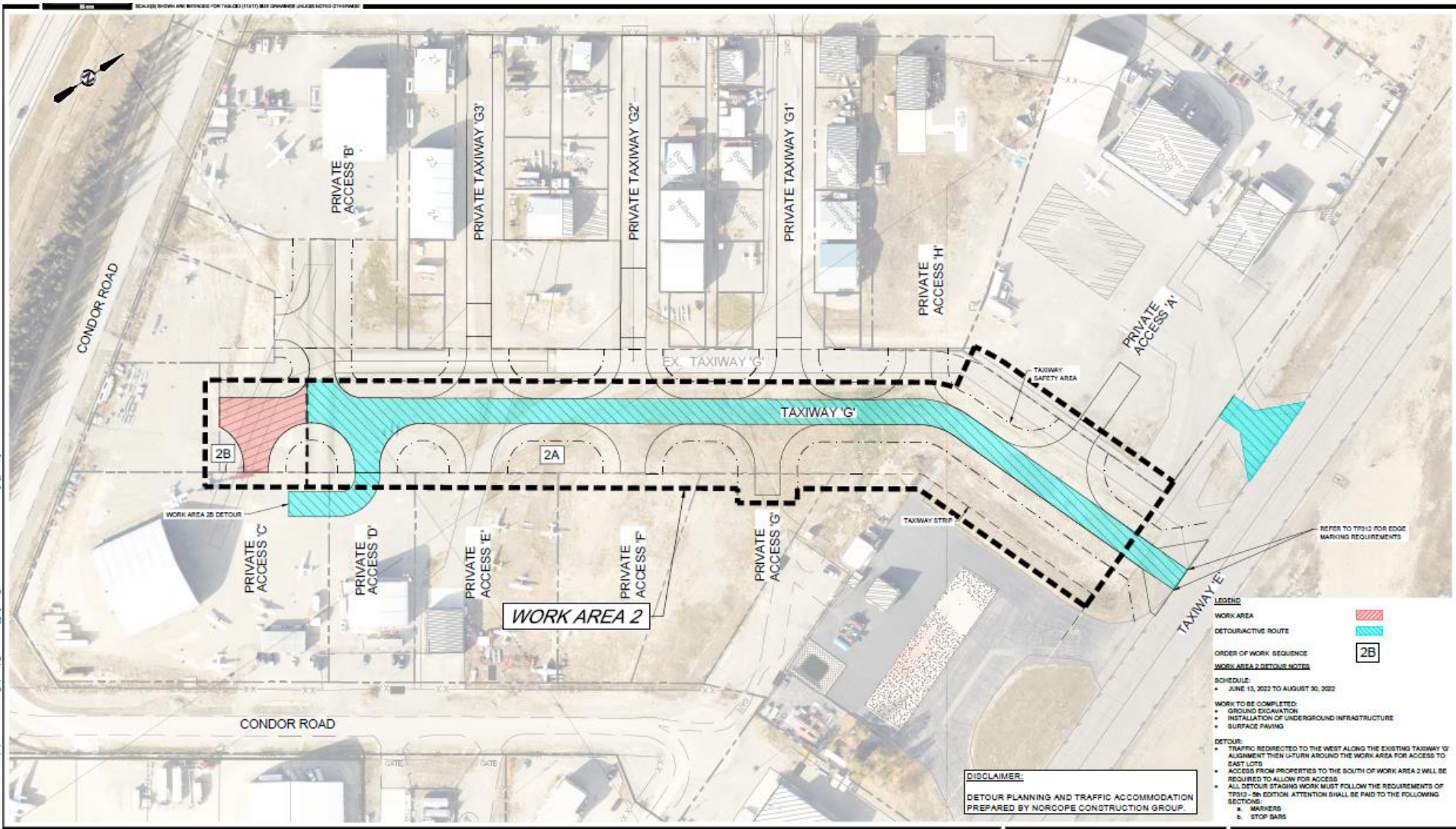
Construction Phases

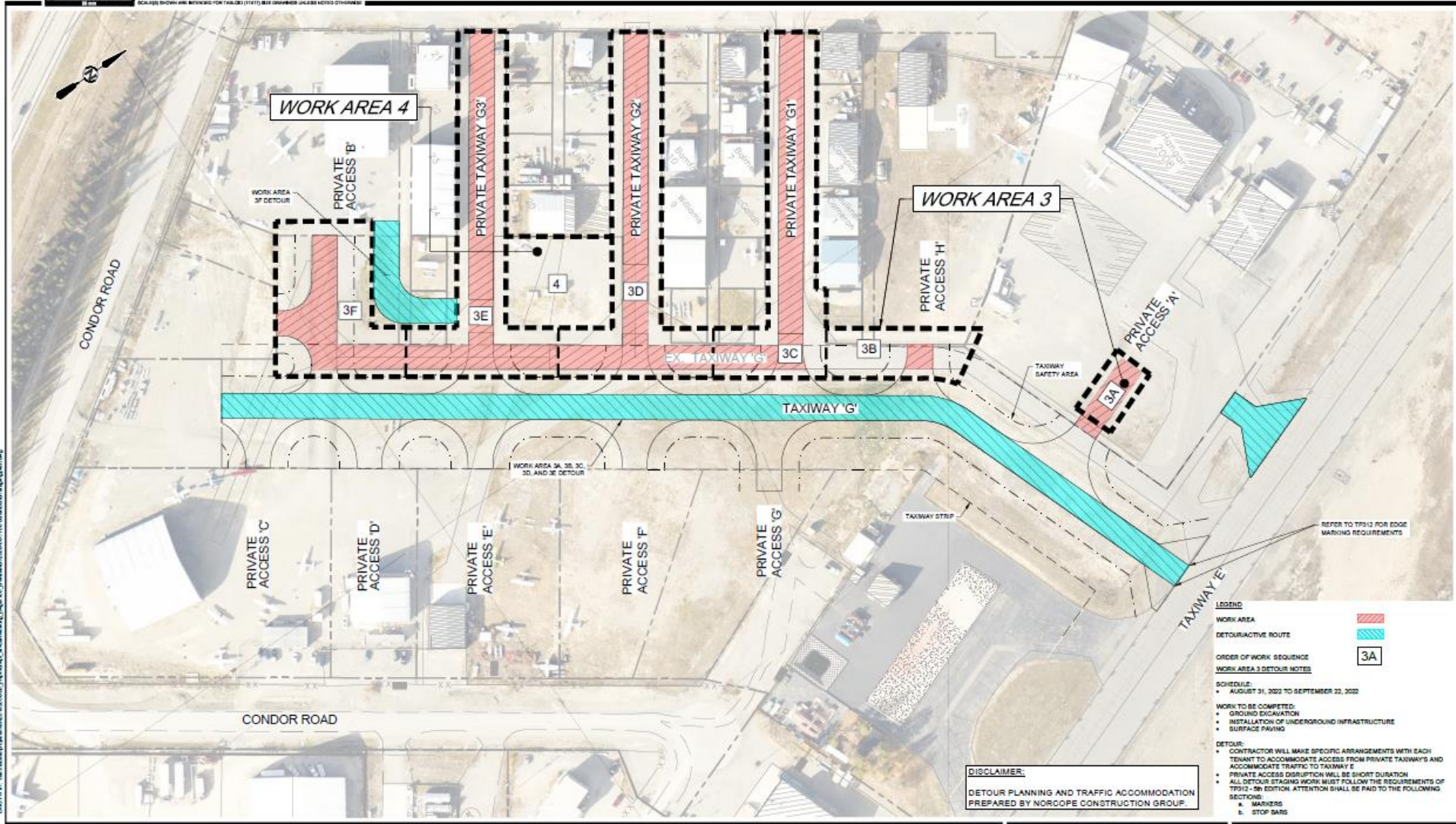
- Preconstruction activities including preliminary water pressure testing, survey and layout will be occurring in the beginning of May 2023
 - This activity should not impact operations and use of tenant's lots
- Construction begins mid May 2023
 - Chipmunk Place surfacing and repaving
 - Taxiway G drainage
 - Construction of new Taxiway G and south accesses
 - Taxiway G stubs, north accesses and water & sewer extension and hydrants
 - Taxiway G paving
- Construction end October 2023













Taxiway G Impacts

- East end of Taxiway G partially closed during Phase 1 (end of May/early June)
- Aircraft detours as construction on G moves West
- Short closures on each Taxiway G stub during construction of the access to G and installation of water, sewer and hydrant infrastructure. Alternate aircraft parking arrangements to be offered.
- Short impact to tenants who have City water service during water testing, and isolation of lines during installation. Advanced notice of work will be provided when available, so as to minimize the impact and length of time that this occurs.